

# Grayhill DuraMaxH

---

## Upgrading the DuraMaxH Operating System And Bootloader



**Grayhill Part Number:**

**M1UM4274-2**

561 Hillgrove Avenue  
LaGrange, IL 60525

Phone: (708) 354-1040  
Fax: (708) 354-2820

On the Internet: <http://www.grayhill.com>

M1UM4274-2

Copyright © 2008 Grayhill, Inc. All rights reserved.

The information supplied in this manual is believed to be reliable and accurate at the time of its publication. Grayhill, Inc. assumes no responsibility for any errors, omissions, or suitability of its products for a particular application. It is recommended that the entire upgrade procedure be read prior to proceeding.

## Audience

This manual provides a procedure to upgrade the Operating System on a DuraMaxH -based device. The information it provides is intended for qualified electrical personnel familiar with installing, programming, and maintaining industrial networks and industrial automation.

# Contents

<b>Introduction .....</b>	<b>3</b>
Components Needed.....	3
<b>Preparing the Device .....</b>	<b>3</b>
1. Current Operating System Version.....	3
2. Current Bootloader version .....	3
2. Connecting Unit to Active Sync .....	4
3. Copy files to Storage Card .....	6
4. Updating the Bootloader.....	6
6. Resetting.....	7
<b>Troubleshooting .....</b>	<b>8</b>


# Introduction

This document will specify the procedure for upgrading an existing DuraMax based product to a different Operating System than what it is currently running. This instruction-set may be used to upgrade or downgrade operating systems on the device. Please advise your Grayhill sales or support representative to ensure that you are using the appropriate operating system for your needs.

## Components Needed

**Table 1. Components Needed**

1. PC with Active Sync Installed
2. 1- DuraMaxH Programming Cable



**WARNING:** An OS upgrade involves formatting the FLASH Disk. Backup all of your data prior to performing the update. All data will be lost.

# Preparing the Device

## 1. Current Operating System Version

Prior to upgrading your device please make a note of the current version of the Operating System. The version and build date can be found via the *start/control panel/platform* applet.

Current Version of Operating System: \_\_\_\_\_

Current Build Date of Operating System: \_\_\_\_\_

## 2. Current Bootloader version

Prior to upgrading your device please make a note of the current version of the Bootloader. The version and build date can be found via the *start/control panel/platform* applet.

Current Version of Operating System: \_\_\_\_\_

Current Build Date of Operating System: \_\_\_\_\_

## Ensure AC Power

Attach the AC adapter to the Handheld's external power port, then connect the power cord to an electrical outlet. Since the upgrade process takes some time, it is recommended that the process is performed while the device is powered to ensure that the process proceeds uninterrupted.



**WARNING:** Use only a Grayhill-approved AC adapter with the Handheld or the Handheld dock. Use of another AC adapter may cause a fire or an explosion. Always connect the AC adapter first to the Handheld or Handheld dock. Use the AC adapter with a properly grounded supply to avoid electrical shock. Before plugging the power cord into the wall socket, make sure its voltage and frequency match that of the AC adapter. If using an extension cord with the provided AC adapter, make sure the total current rating of the product does not exceed the current rating of the extension cord.

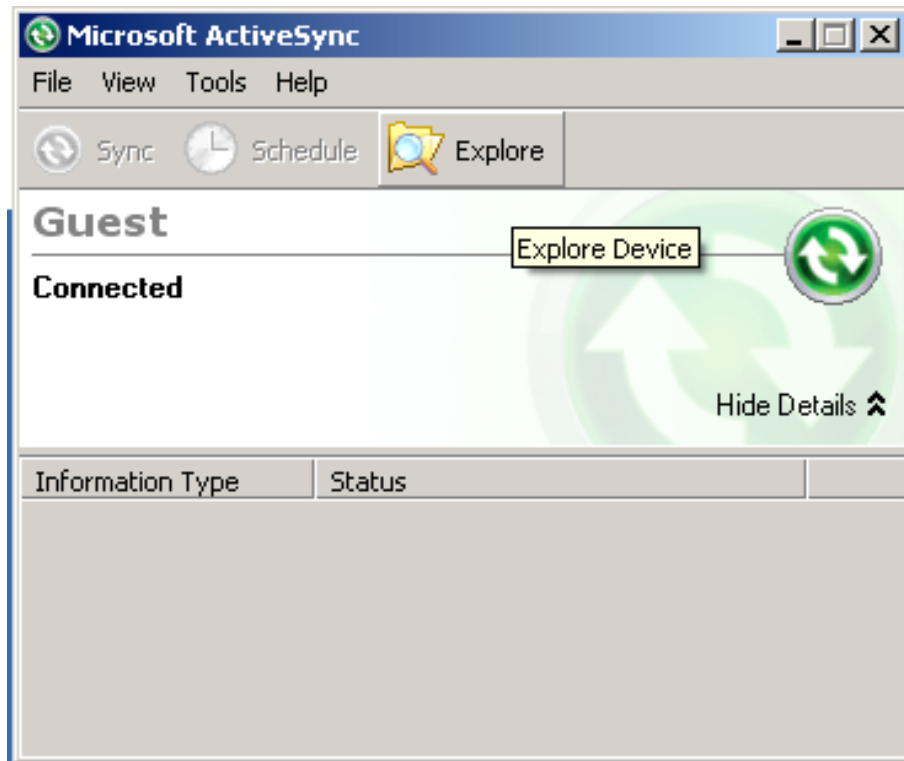
## 2. Connecting Unit to Active Sync

Connect the programming cable to the DuraMaxH unit and connect to unit using Active Sync. For more information on how to connect to the DuraMaxH unit refer to the user manual.

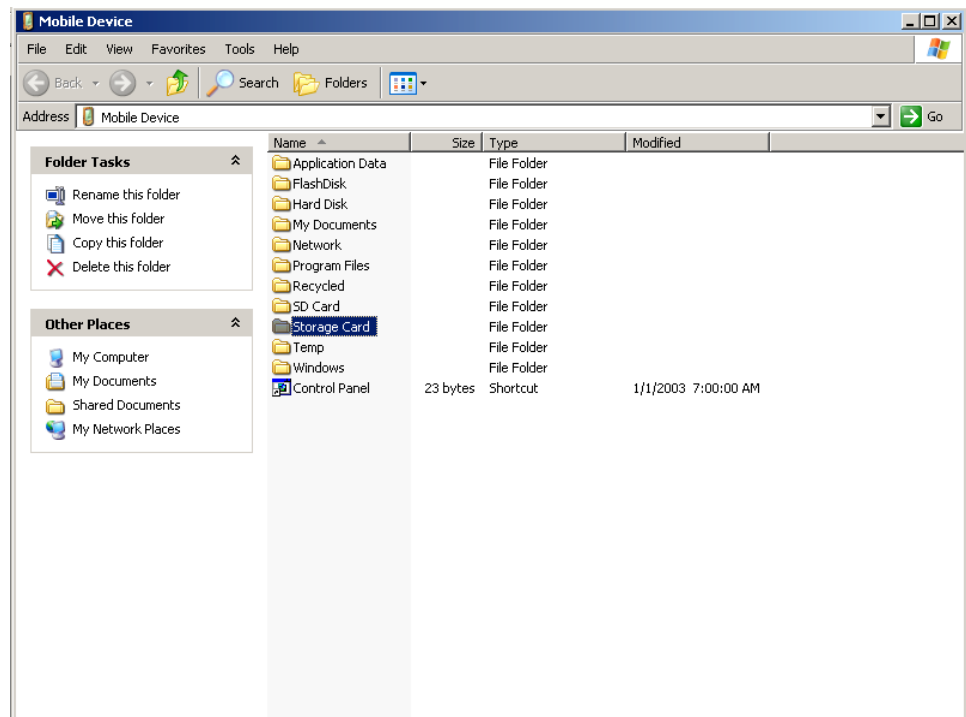
Once Connected the following window will appear. Click no and Next.



After Connected Click on the Explore Icon as shown below.



The following window will appear after the Explore Icon is clicked.



### 3. Copy files to Storage Card

The following files need to be copied to the Storage Card:

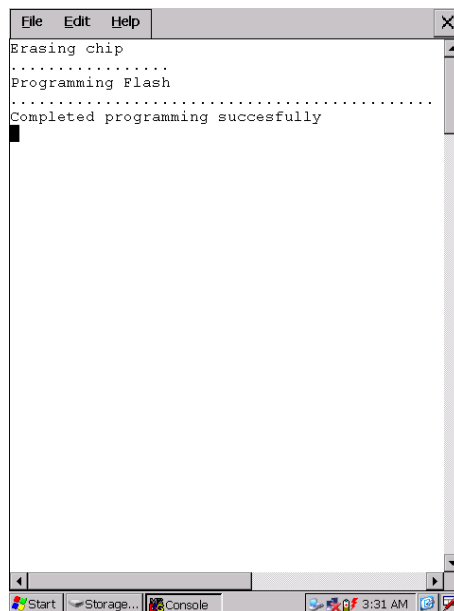
DmaxHnk.BIN  
BLupdate.EXE  
EBOOT.NB0

NOTE: Some or all files may need to be uncompressed or un-zipped first.

### 4. Updating the Bootloader

#### Run the bootloader programmer utility

From MyDevice/Storage Card/ (On the Handheld unit)  
Run (Double Click) on blupdate.exe. A Status window will appear while running. Do not disconnect power at this point. A power interruption may corrupt the device. After the programming is successful the window will disappear.



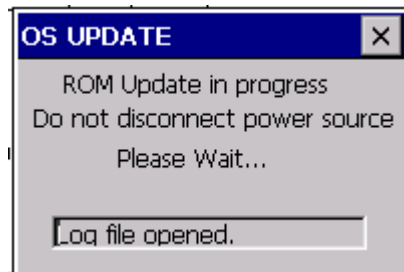
## 6. Resetting

Press and hold down the power button for approximately 10 seconds or until unit begins to reboot. This will reset the device and the upgrade process will begin.



The upgrade process can take some time so please be patient. (Typically about 2-3 minutes).

During the upgrade process a window like the one shown below will appear.



Upon completing the upgrade process the device will boot with the Windows CE desktop present.

Delete the files from the "Storage Card"

To ensure that the update was applied successfully press and hold down the power button for approximately 10 seconds or until unit begins to reboot

Verify that the version and build date have been updated from the original version number and build date which were noted in step #1 of this guide.

## Troubleshooting

- You can try to manually update the unit by the following steps. Ensure the “Storage Card” under MyDevice has the appropriate file on it. Execute the nkupdate.exe located in the windows directory under MyDevice. Delete the files from the CF Card. To ensure that the update were applied successfully press and hold down the power button for approximately 10 seconds or until unit begins to reboot. Verify that the version and build date have been updated from the original version number and build date which were noted in step #1 of this guide.
- If the device does not boot correctly after an upgrade then remove the PC Card and reboot the device by pressing and holding down the power button for approximately 10 seconds or until unit begins to reboot.